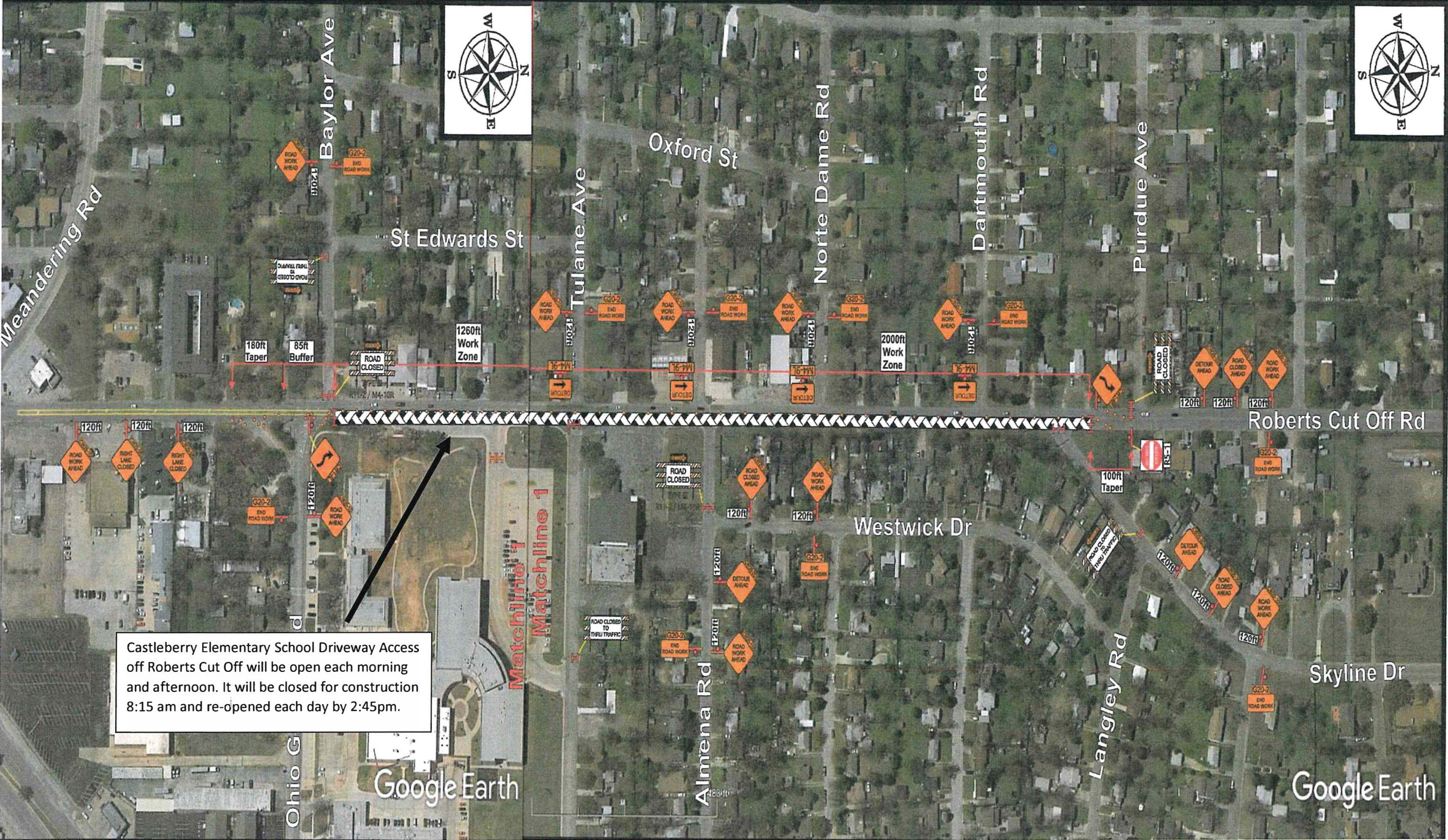


PUBLIC NOTICE: Roberts Cut Off Paving Improvements Project (Project Limits- Purdue Ave. to Baylor Ave.)

Scheduled Traffic Lane Switch: January 29th Tuesday 8:15 am (Weather Permitting). The Roberts Cut Off South Bound Traffic will remain detoured at Purdue to Yale Street. The North Bound Traffic will transition to use the new lane and then transition back to Northbound Lane at Purdue. Note: Baylor will be closed at Roberts Cut Off.



Castleberry Elementary School Driveway Access off Roberts Cut Off will be open each morning and afternoon. It will be closed for construction 8:15 am and re-opened each day by 2:45pm.